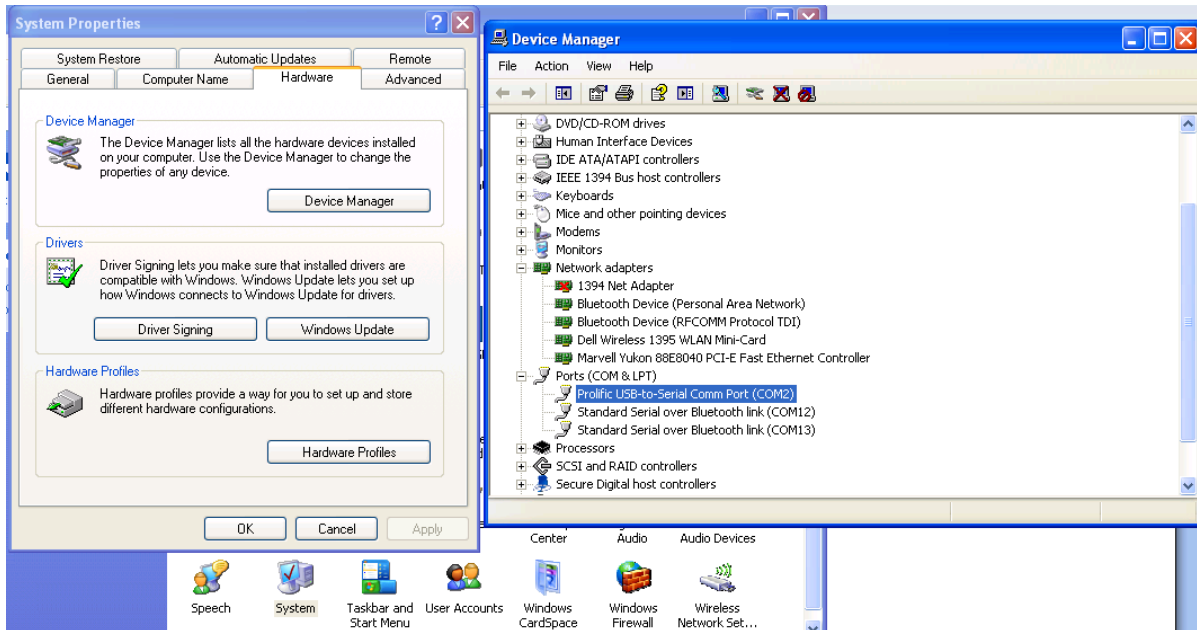


## FX-INTERFACE PROFESSIONAL v3

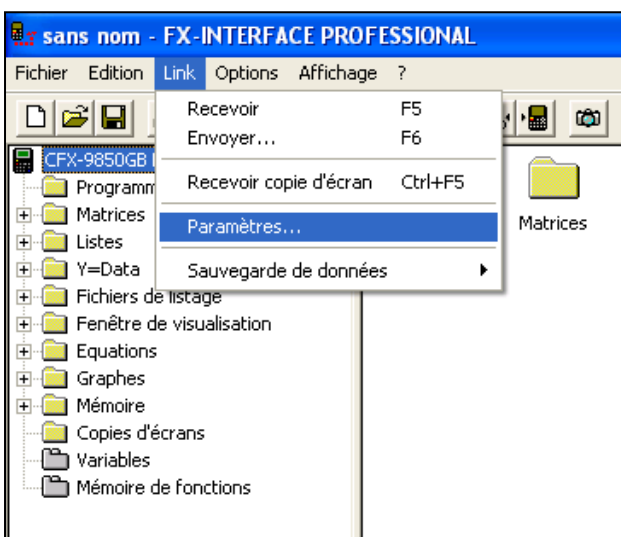
### Explanation/translation of the French program to upload an FXI program to an fx7400g+ Calculator

1. Install "FX\_Interface\_Pro\_3"
2. Connect the Interface cable via a USB port.
3. Run "Control Panel", "System", "Hardware", "Device Manager" (or similar combination) to determine which Port is being used. eg COM2.

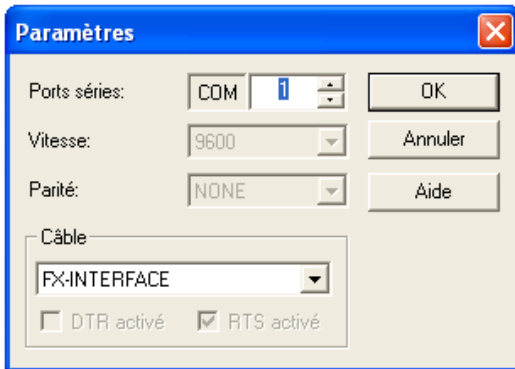


Close Control Panel.

4. Run "FXIWIN32.exe" (FX Interface Pro 3).
5. Select "Link" (Link), "Parametres" (Parameters):

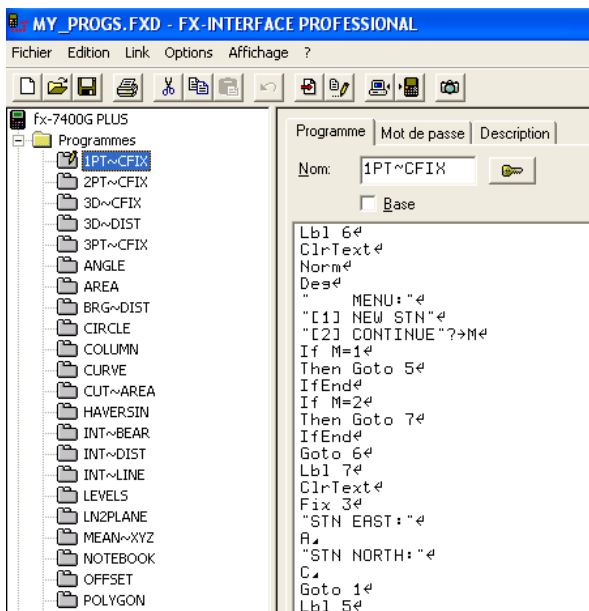


6. Change the COM port to match the USB connection to your computer:



7. Select “Fichier” (File), “Ouvrir” (Open) and browse to an unzipped “FXI” file. eg. “my\_progs.fxi”

8. Clicking on the “+” symbol next to “Programmes” will display a list of program(s) within the file.



9. To transfer the programs to a calculator:

Either select “Link” (Link), “Envoyer” (Send) OR click on the Calculator icon on the menu bar. This displays a list of the program(s) to be uploaded.

10. Click the tick-box of the programs that are required to be sent to the calculator.

**DO NOT PRESS “ENVOYER” (SEND) YET!**

“Annuler” – Exit

“Toutes” – Select All

“Aucune” – Select None

11. Prepare the Calculator ready to receive:

Ensure that the cable is **fully** inserted.

Menu 7 (Link), F2 (Receive). Calculator should display “Receiving... AC:Cancel”

12. Select “Envoyer” (Send)

13. The selected programs will be transferred to the Calculator.

Troubleshooting:

If no programs are transferred, check the following (in order):

- a. The cable is fully inserted into the calculator (“click”)
- b. The correct COM port is selected within the program
- c. Re-set the calculator and re-send
- d. Check the Computer COM parameters: Baud=9600, Data Bits=8, Parity=None, Stop Bits=1, Flow Control=None
- e. Close the program and re-try
- f. Re-boot computer and re-try